





NEXA Properties are delighted to welcome to the market this beautifully presented three bedroom home, benefitting from bay and forecourt in the sought after location of Empshott Road, Southsea.

This family home offers a lovely blend of original features and modern decor that will appeal to many. Internally the property has been very well maintained by the current owners and offers two separate reception rooms, one benefitting from a snug log burner. These rooms are complemented by the modern galley style kitchen, positioned centrally to the home, further benefits include downstairs W.C. and an extra lean to for storage. Upstairs offers three bedrooms and family bathroom with a low maintenance SOUTH FACING garden to the rear.

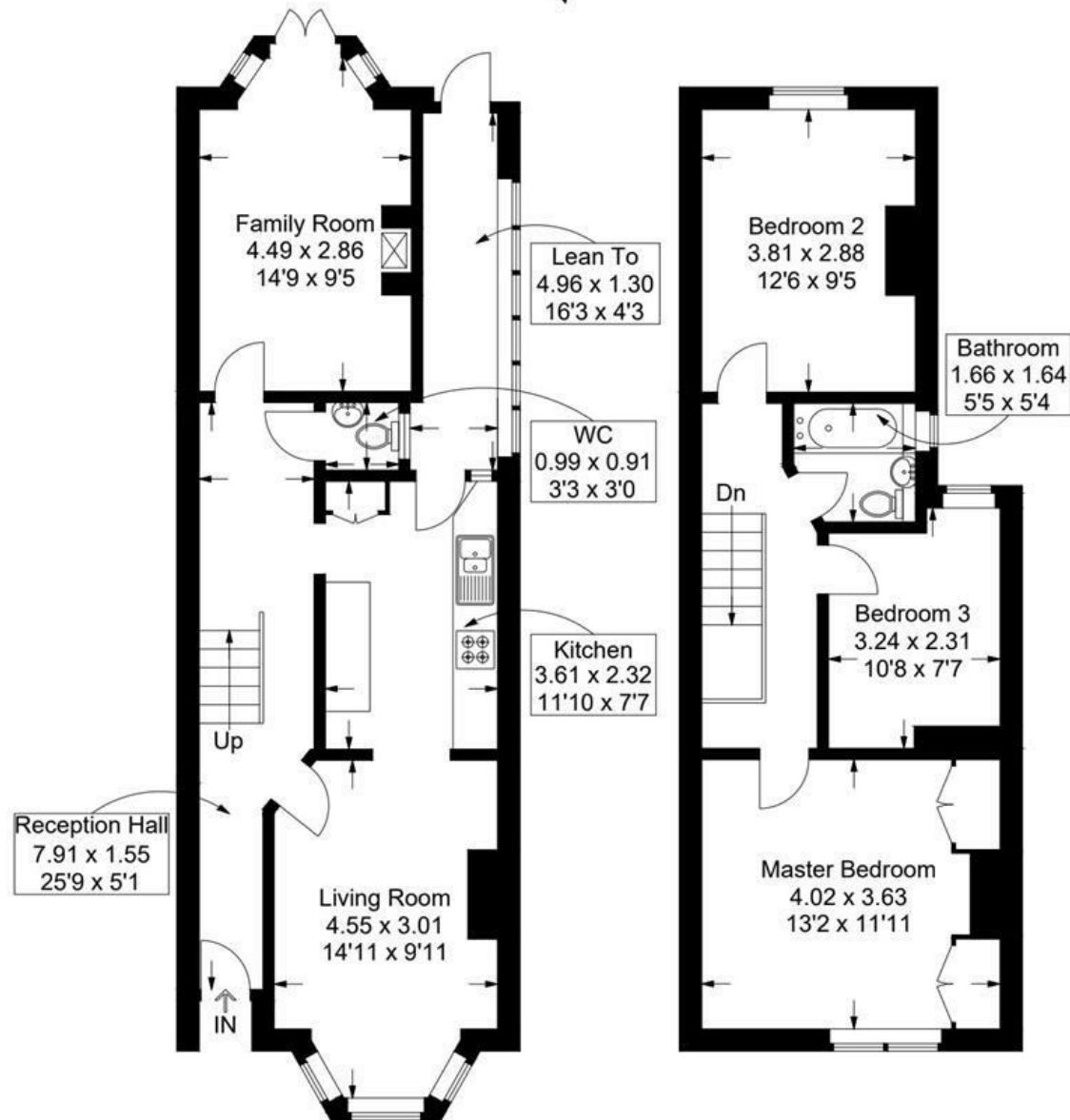
The location is extremely popular just a short walk to Milton Park, local shops and situated in an excellent catchment area for lots of popular schools. A swift viewing is highly recommended.

- THREE BEDROOM HOUSE
- TWO RECEPTION ROOMS
- SOUTH FACING GARDEN
- POPULAR LOCATION
- UPSTAIRS BATHROOM
- VICTORIAN FEATURES
 - LOG BURNER
- MODERN AND WELL MAINTAINED HOME



Empshott Road, Southsea

Approximate Gross Internal Area = 95.7 sq m / 1030 sq ft



Ground Floor

This plan is for layout guidance only. Not drawn to scale unless stated. Windows and door openings are approximate. Whilst every care is taken in the preparation of this plan, please check all dimensions, shapes and compass bearings before making any decisions reliant upon them.